



**CORSE** 2020  
10-11 SEPT.

21<sup>e</sup> EDITION

CENTRE DES CONGRÈS  
PORTO-VECCHIO

[www.sres-symposium.org](http://www.sres-symposium.org)



# Session 6 A

# Aorte Thoracique

Iannis Ben Abdallah (Paris)



Femme, 57 ans, 68kg, 165 cm, HTA, Diabète insulino-dépendant

Antécédent d'AVC sylvien avec hémiparésie séquellaire et troubles cognitifs sévères

Score MET<4, pas d'angor

Novembre 2019 : Exploration d'une paralysie faciale par angioscanner TSAO : découverte d'une dissection de type B.

Syndrome douloureux abdominal aigu : Angioscanner aortique montrant une rupture contenue du faux-chenal au niveau abdominal traitée en urgence par mise à plat-greffe prothétique aorto-aortique abdominale

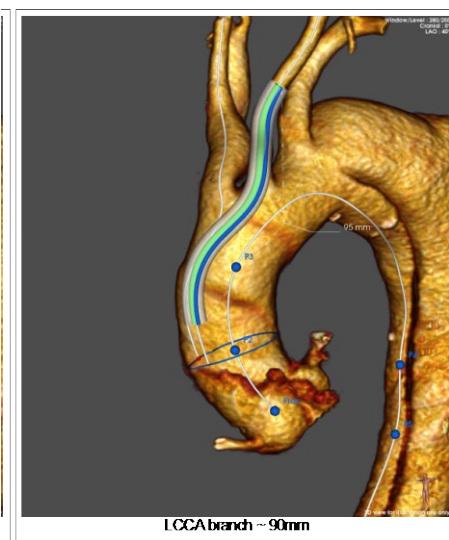
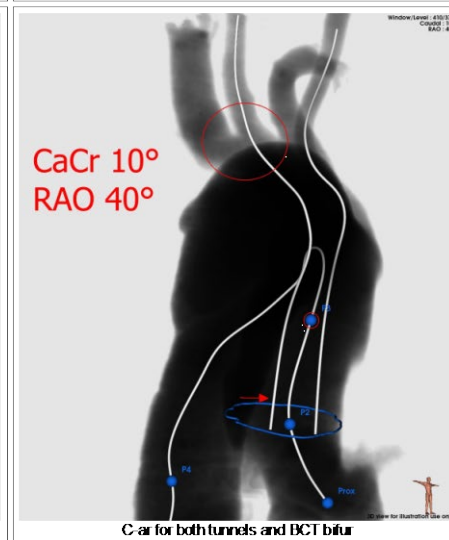
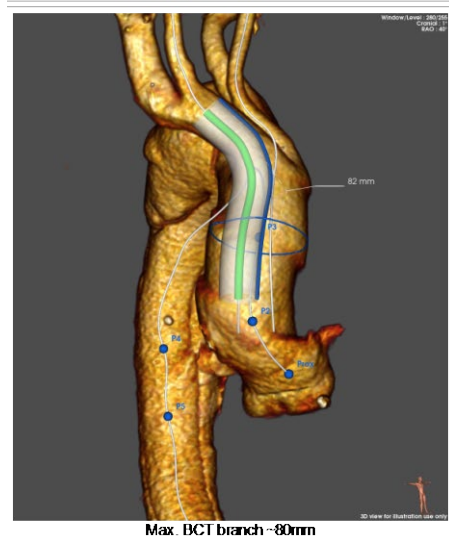
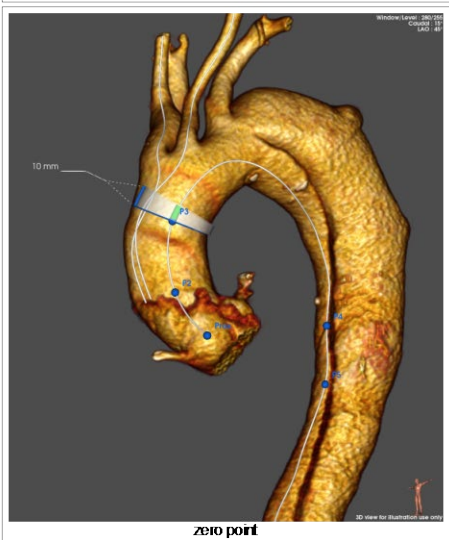
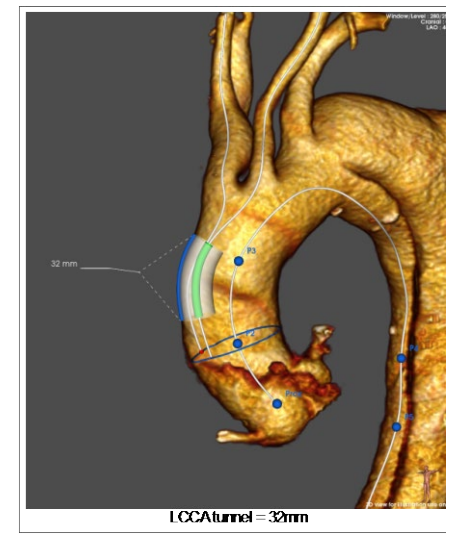
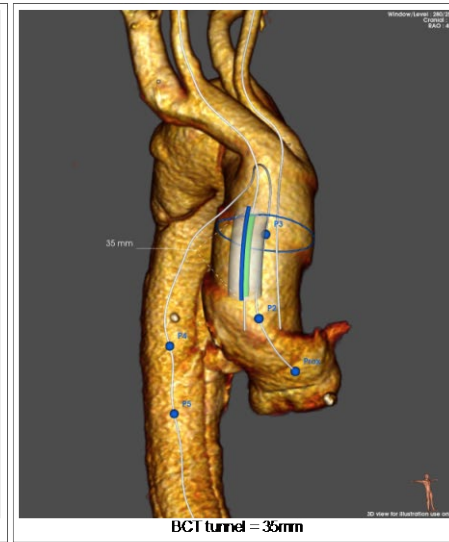
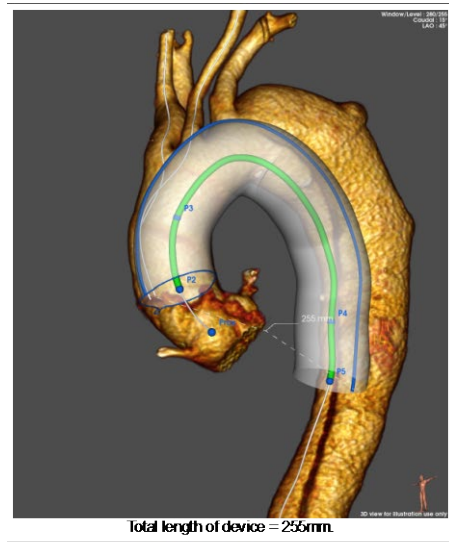
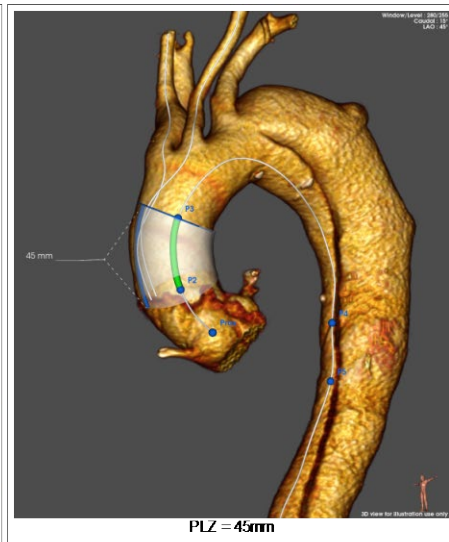
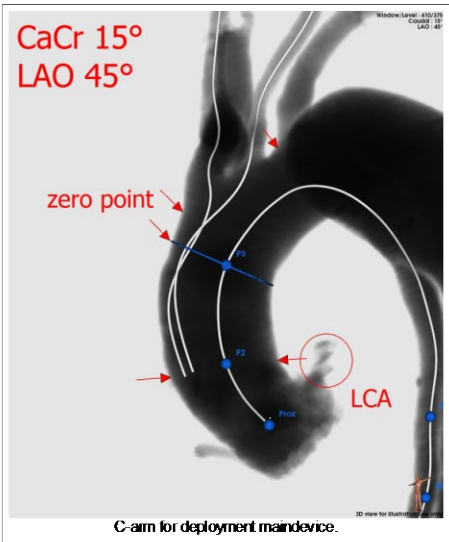


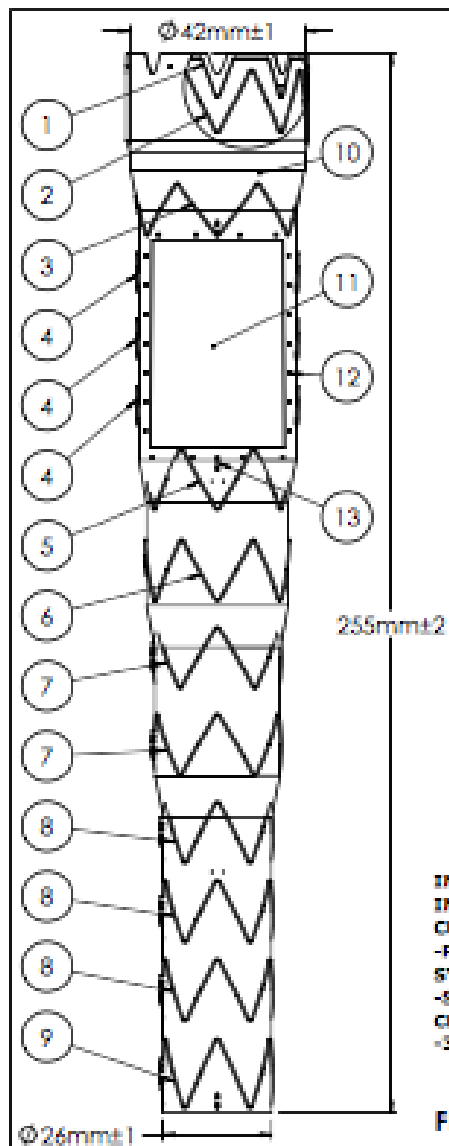
Diamètre aortique isthmique en novembre 2019 : 51x54mm  
Prise en charge au Centre Aorte Timone : Angioscanner de  
contrôle à 4 mois (06/03/2020)  
Prise en charge ?





- Transposition SCG dans la CCG
- Endoprothèse double branche de la crosse Terumo Aortic avec abord des deux carotides primitives
- Guide Lunderquist double courbure dans le VG avec rapid-pacing sur guide
- Repérage des marqueurs par 45° d'OAG et 10° de caudal
- STABILISE aorte thoraco-abdominale GORE C-TAG 404015 et COOK dissection ZDES 46-185





**INTRODUCER FR: 26FR**  
**INTRODUCER LENGTH: 60.0CM**  
**CUSTOM FEATURE(S):**  
**-RELAY NBS PLUS DELIVERY SYSTEM**  
**-SECONDARY AND TERTIARY CLASP DISTAL TO FENESTRATION**  
**-30 DEGREE POSTERIOR OFFSET**

**FIGURE 1**

The manufacturing of custom devices will only commence upon the receipt of a physician prescription and a physician approved device drawing by Terumo Aortic USA.

Terumo Aortic  
 Email: [custommade@terumoaortic.com](mailto:custommade@terumoaortic.com)

Physician Approval: \_\_\_\_\_

Date: \_\_\_\_\_

ITEM NO.	PART NUMBER	DESCRIPTION	QTY.
1	2822-0579-11	42mm Crown Spring	1
2	2822-0575-11	42mm NBS Proximal Spring	1
3	2822-0251-03	38mm Proximal Spring	1
4	2822-1416-06	38mm Hemi Stent 7 Apex	3
5	2822-0248-00	32mm Middle Spring	1
6	2822-0248-01	34mm Middle Spring	1
7	2822-0247-04	30mm Middle Spring	2
8	2822-0247-02	26mm Middle Spring	3
9	2822-0256-02	26mm Distal Spring	1
10	2822-1323-12	TAA Branch Main Graft 44/42mm X 290mm	1
11	2833-0539-02	Short 31 x 12 D1 Bifurcated Graft Sub Assembly	1
12	2822-0917	Tube Marker Band - P1r 0.0275 x 0.0175 x 0.025	30
13	2822-0557	Cylindrical Marker	5
14	2822-0315	5-0 Suture	30

- NOTES:  
 1. Refer to Figure 3 for spring identification.  
 2. All components are attached to the fabric using suture.

<b>PROBABLE AND COMMENTS</b>		Last Modified By: <b>ALB</b>			
<small>THE INFORMATION CONTAINED IN THIS DRAWING IS THE SOLE PROPERTY OF TERUMO AORTIC, INC. ANY REPRODUCTION IN PART OR IN WHOLE WITHOUT THE WRITTEN PERMISSION OF TERUMO AORTIC, INC IS PROHIBITED.</small>		Drawn by: <b>ALB</b>	DATE: <b>02/27/2020</b>		
<small>UNLESS OTHERWISE SPECIFIED DIMENSIONS ARE IN MILLIMETERS TOLERANCES: DECIMALS - XX ± 0.01 XXX ± 0.0025 XXXX ± 0.0001</small>		<small>ANGLES - ± 1.0°</small>		<small>SEE DRG. NO. 2833-0406-PAT 2354</small>	<small>REV N/A</small>
<small>SCALE: 1:1</small>		<small>REPLACED BY: W-0316 REV H</small>		<small>COMPONENT CLASS: N/A / N/A</small>	
<small>DATE: 04</small>		<small>DATE: SEE NOTES</small>		<small>CATEGORY: PRODUCTION (CUSTOM) SHEET 1 OF 7</small>	



- Paraparésie régressive sous DLE et hypertension artérielle contrôlée
- Scanner de contrôle